

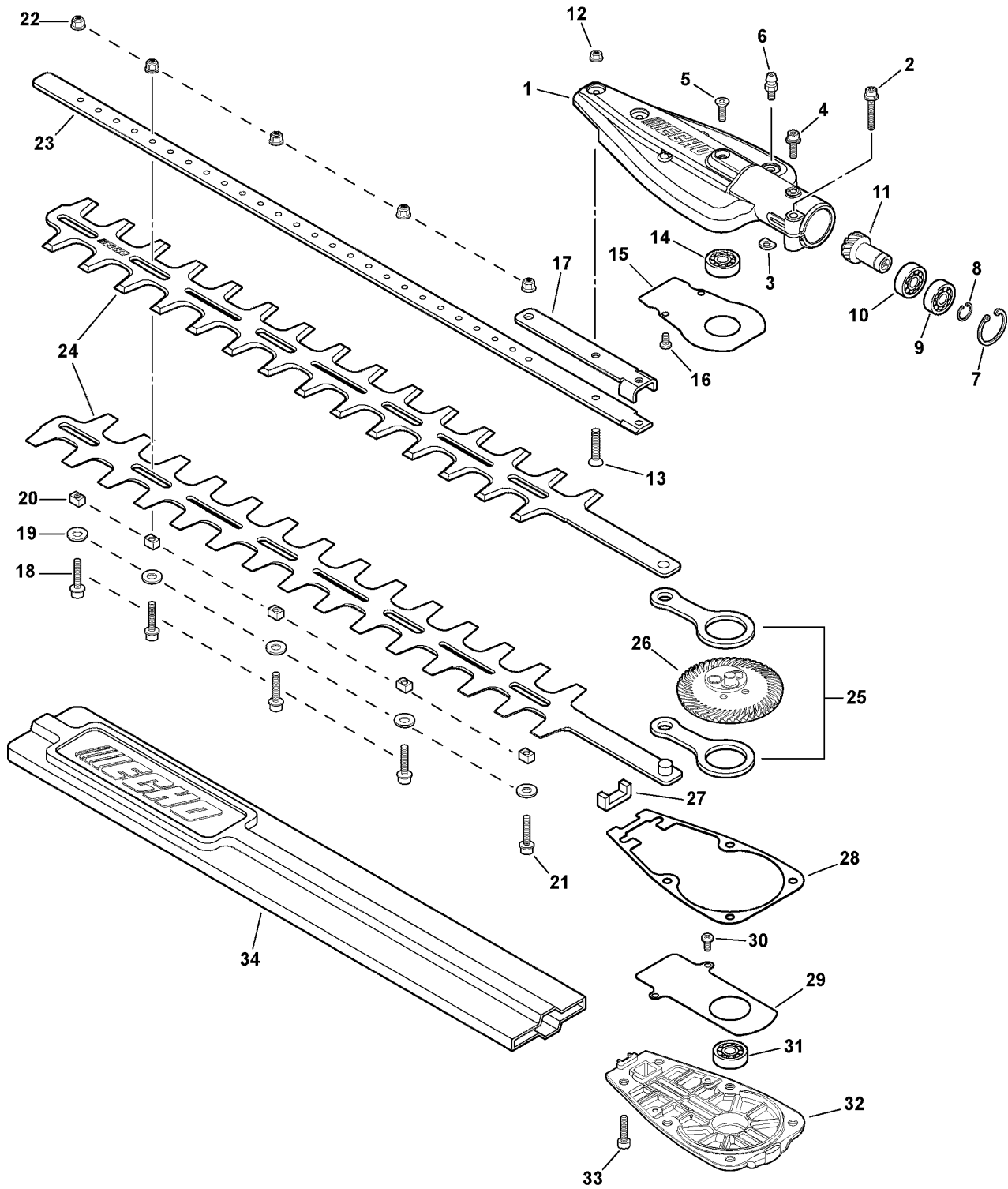


# **PARTS CATALOGUE**

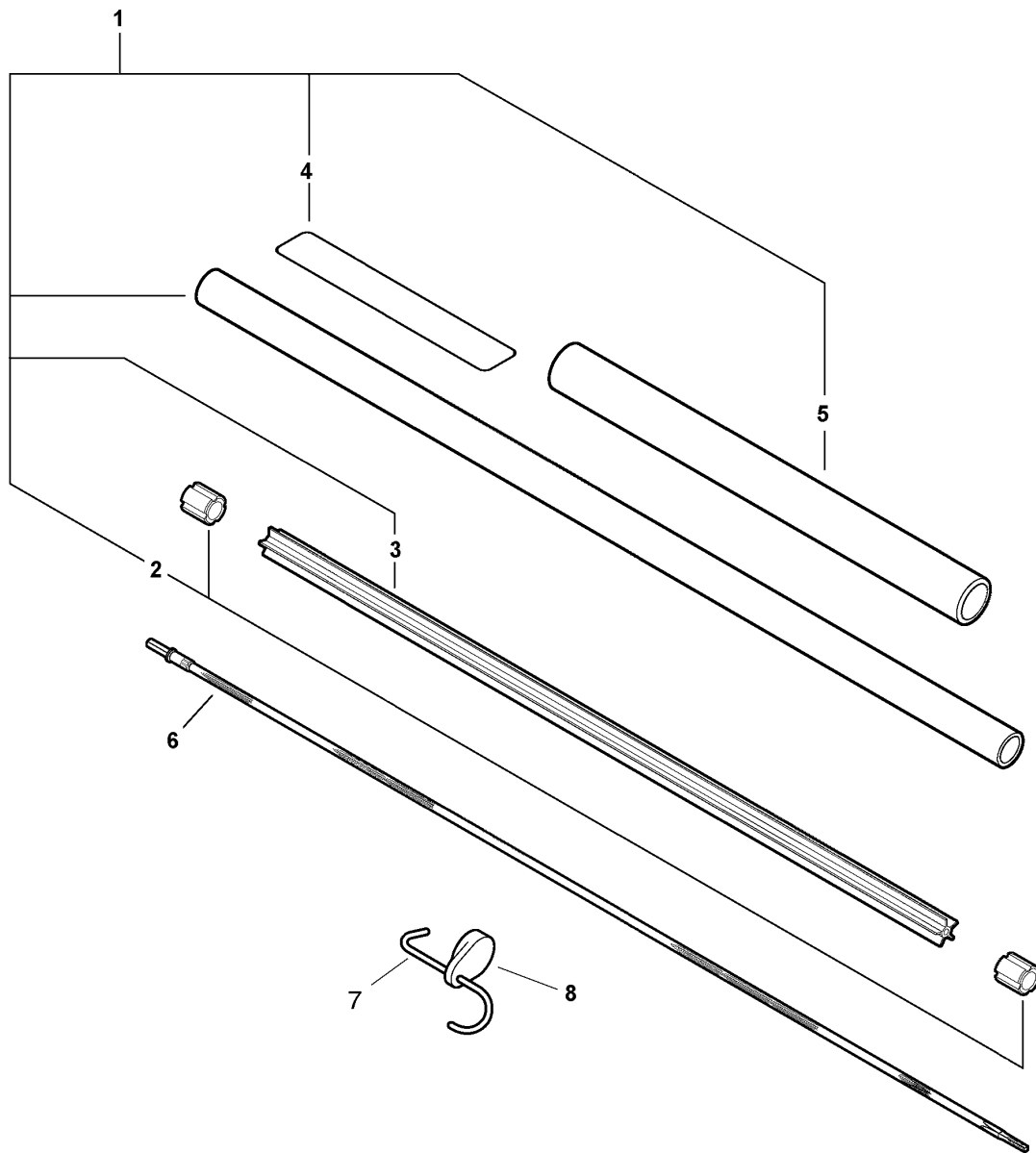
**HEDGE CLIPPER  
ATTACHMENT  
999442-0085**

**CE**

# 999442-00885 1 Gear Case, Blades



KEY	LV	PART NUMBER	Q'TY	DESCRIPTION	REMARKS
1		C531-000410	1	CASE,GEAR	
2		900162-05025	1	BOLT, H.S. 5*25	
3		610239-04130	1	WASHER, SHIM	
4		900162-05012	1	BOLT, H.S. 5*12	
5		V253-000160	1	SCREW,5	
6		880110-54230	1	NIPPLE, GREASE	
7		610335-21460	1	RING, RETAINING	
8		900706-00012	1	CIRCLIP 12	
9		900855-06901	1	BEARING, BALL 6901	
10		900858-06901	1	BEARING,BALL BB6901Z	
11		V651-000290	1	GEAR,BEVEL	
12		900516-00005	2	NUT, FRANGE 5	
13		900212-05018	2	SCREW M5*0.8*18	
14		900804-00608	1	BEARING, BALL 608	
15		K123-000020	1	PLATE,CASE	
16		91330-04005	2	SCREW	
17		V150-001860	1	PLATE,EYE	
18		91107-05018	4	BOLT, FLANGE	
19		177214-21860	5	WASHER	
20		V353-000250	5	COLLAR,5	
21		91107-05022	1	BOLT, FLANGE	
22		92108-05000	5	NUT, FLANGE	
23		X425-000410	1	SUPPORT,CUTTER	
24		X411-000650	2	CUTTER	
25		C532-000180	2	ROD, CONNECTING	
26		V651-000300	1	GEAR,BEVEL	
27		V541-000130	1	SEAL	
28		V110-000070	1	GASKET,GEAR CASE	
29		K123-000010	1	PLATE,CASE	
30		91330-04005	2	SCREW	
31		900814-00628	1	BEARING, BALL 628	
32		C531-000420	1	CASE,GEAR	
33		900105-05012	6	BOLT, H.S. 5*12	
34		X495-000170	1	SCABBARD,BLADE	



KEY	LV	PART NUMBER	Q'TY	DESCRIPTION	REMARKS
1		C050-000990	1	PIPE, MAIN	
2	+	610246-44730	2	STOPPER	
3	+	610217-21960	1	LINER, FLEXBLE	
4	+	890617-21661	1	LABEL, CAUTION	
5	+	351012-21560	1	GRIP, HANDLE	
6		610013-21962	1	SHAFT, FLEXIBLE	
7		C649-000120	1	HOOK	
8		C525-000010	1	CAP, MAIN PIPE	

**Index**

<b>Parts Number</b>	<b>Key No.</b>	<b>Parts Number</b>	<b>Key No.</b>	<b>Parts Number</b>	<b>Key No.</b>
C050-000990	2 - 1				
C525-000010	2 - 8				
C531-000410	1 - 1				
C531-000420	1 - 32				
C532-000180	1 - 25				
C649-000120	2 - 7				
K123-000010	1 - 29				
K123-000020	1 - 15				
V110-000070	1 - 28				
V150-001860	1 - 17				
V253-000160	1 - 5				
V353-000250	1 - 20				
V541-000130	1 - 27				
V651-000290	1 - 11				
V651-000300	1 - 26				
X411-000650	1 - 24				
X425-000410	1 - 23				
X495-000170	1 - 34				
177214-21860	1 - 19				
351012-21560	2 - 5				
610013-21962	2 - 6				
610217-21960	2 - 3				
610239-04130	1 - 3				
610246-44730	2 - 2				
610335-21460	1 - 7				
880110-54230	1 - 6				
890617-21661	2 - 4				
900105-05012	1 - 33				
900162-05012	1 - 4				
900162-05025	1 - 2				
900212-05018	1 - 13				
900516-00005	1 - 12				
900706-00012	1 - 8				
900804-00608	1 - 14				
900814-00628	1 - 31				
900855-06901	1 - 9				
900858-06901	1 - 10				
91107-05018	1 - 18				
91107-05022	1 - 21				
91330-04005	1 - 16				
91330-04005	1 - 30				
92108-05000	1 - 22				



# KIORITZ CORPORATION

7-2 SUEHIROCHO 1-CHOME, OHME, TOKYO 198-8711, JAPAN  
PHONE: 81-428-32-6118. FAX: 81-428-32-6145.

**ECHO**<sup>®</sup>

2008 No.64-238(-----)